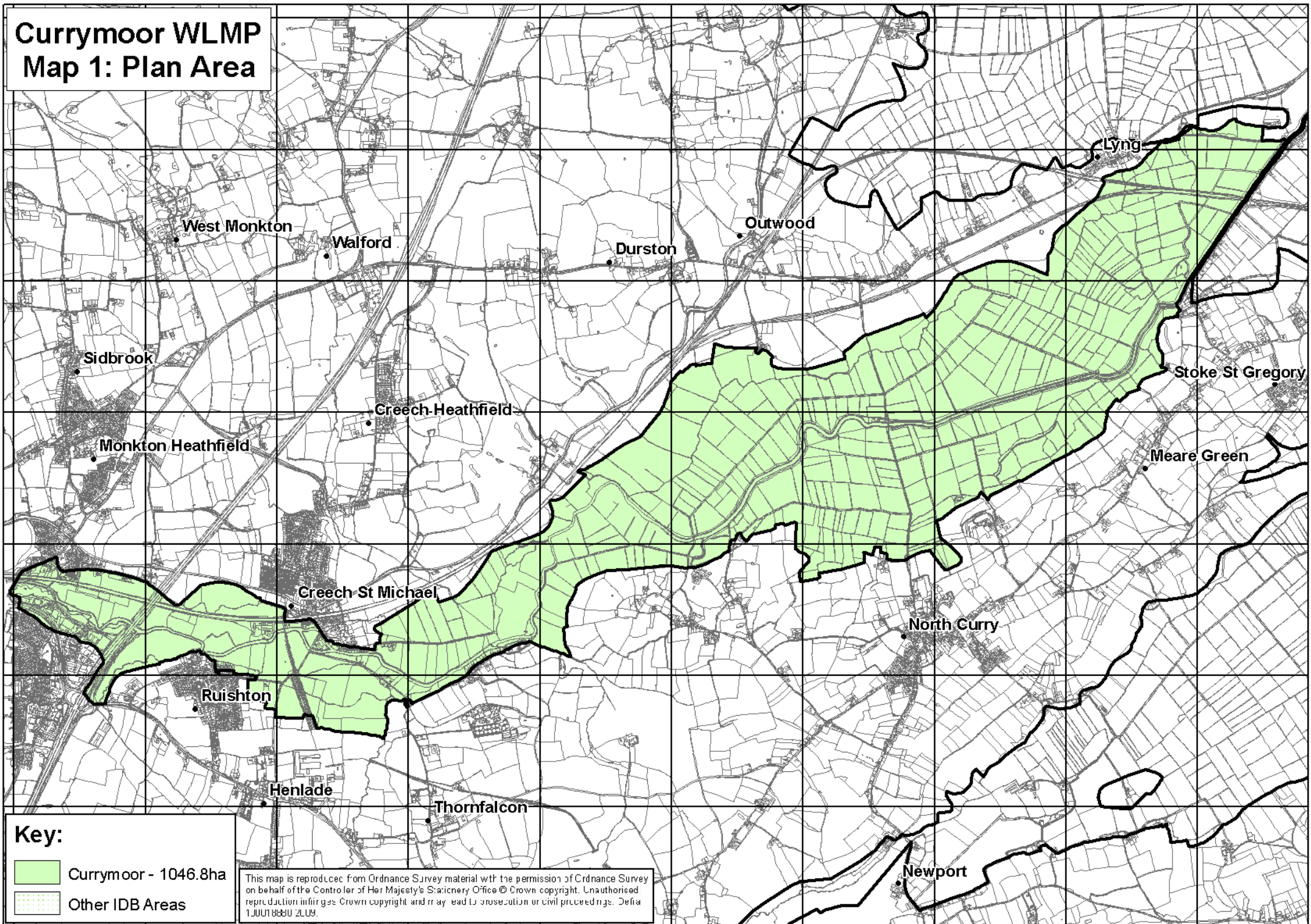
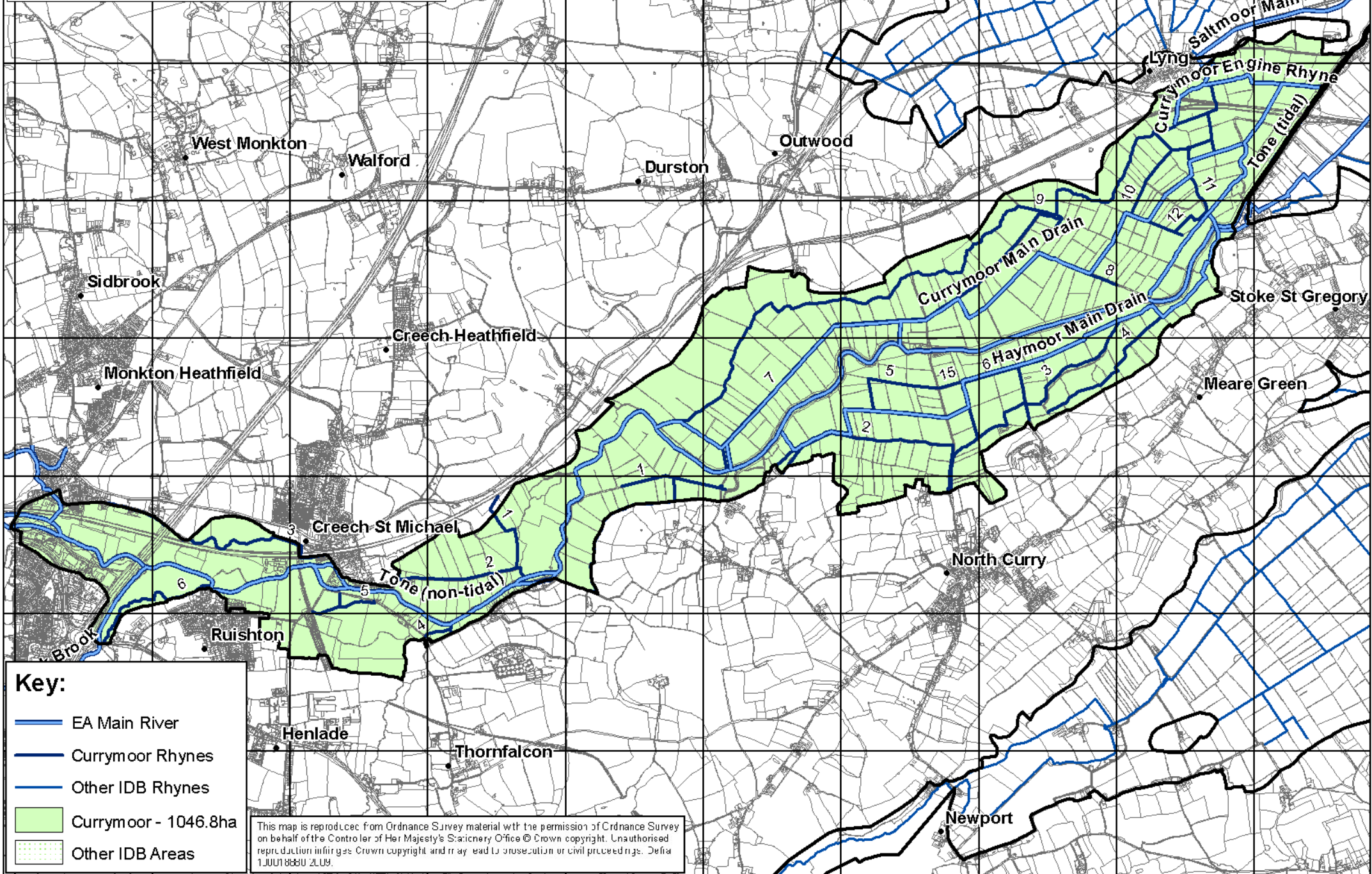


Currymoor WLMP Map 1: Plan Area



Currymoor WLMP

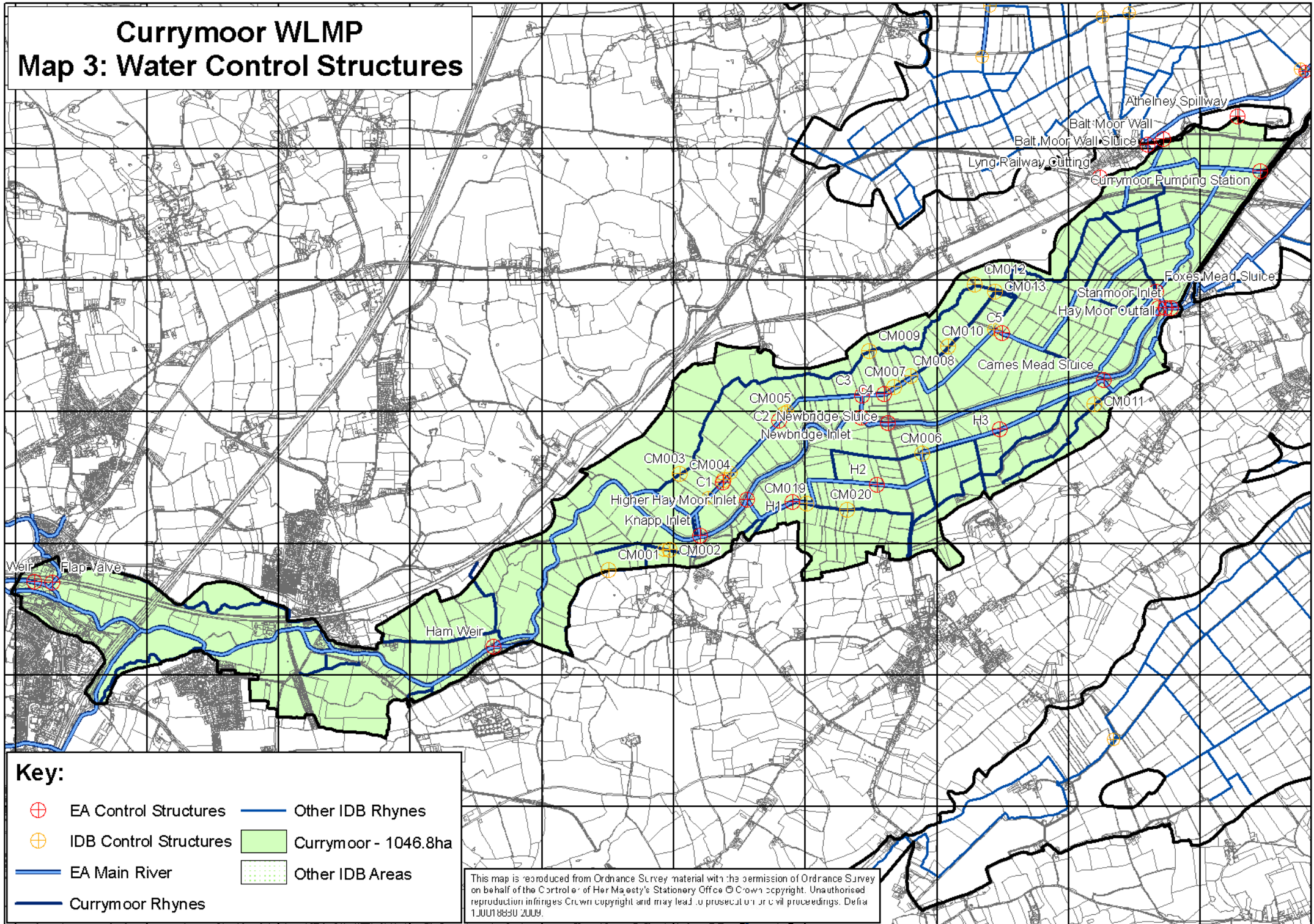
Map 2: Arterial Watercourses



This map is reproduced from Ordnance Survey material with the permission of Ordnance Survey on behalf of the Controller of Her Majesty's Stationery Office © Crown copyright. Unauthorised reproduction infringes Crown copyright and may lead to prosecution or civil proceedings. Defra 1 JUN 2009 2LU9.

Currymoor WLMP

Map 3: Water Control Structures



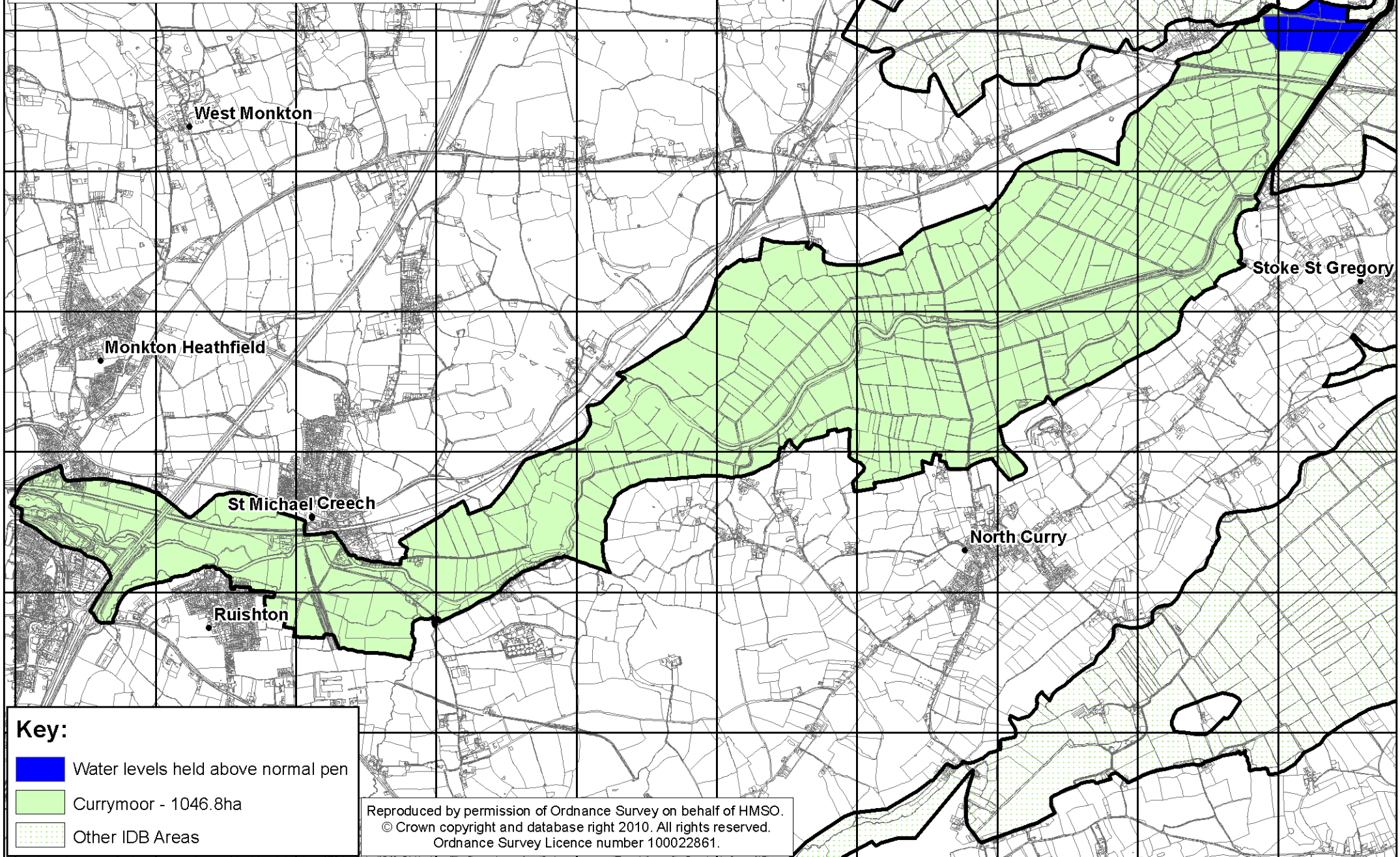
Key:

- ⊕ EA Control Structures
- ⊕ IDB Control Structures
- EA Main River
- Currymoor Rhynes
- Other IDB Rhynes
- Currymoor - 1046.8ha
- Other IDB Areas

This map is reproduced from Ordnance Survey material with the permission of Ordnance Survey on behalf of the Controller of Her Majesty's Stationery Office © Crown copyright. Unauthorised reproduction infringes Crown copyright and may lead to prosecution or civil proceedings. Defra 1 JUN 2009 2009.

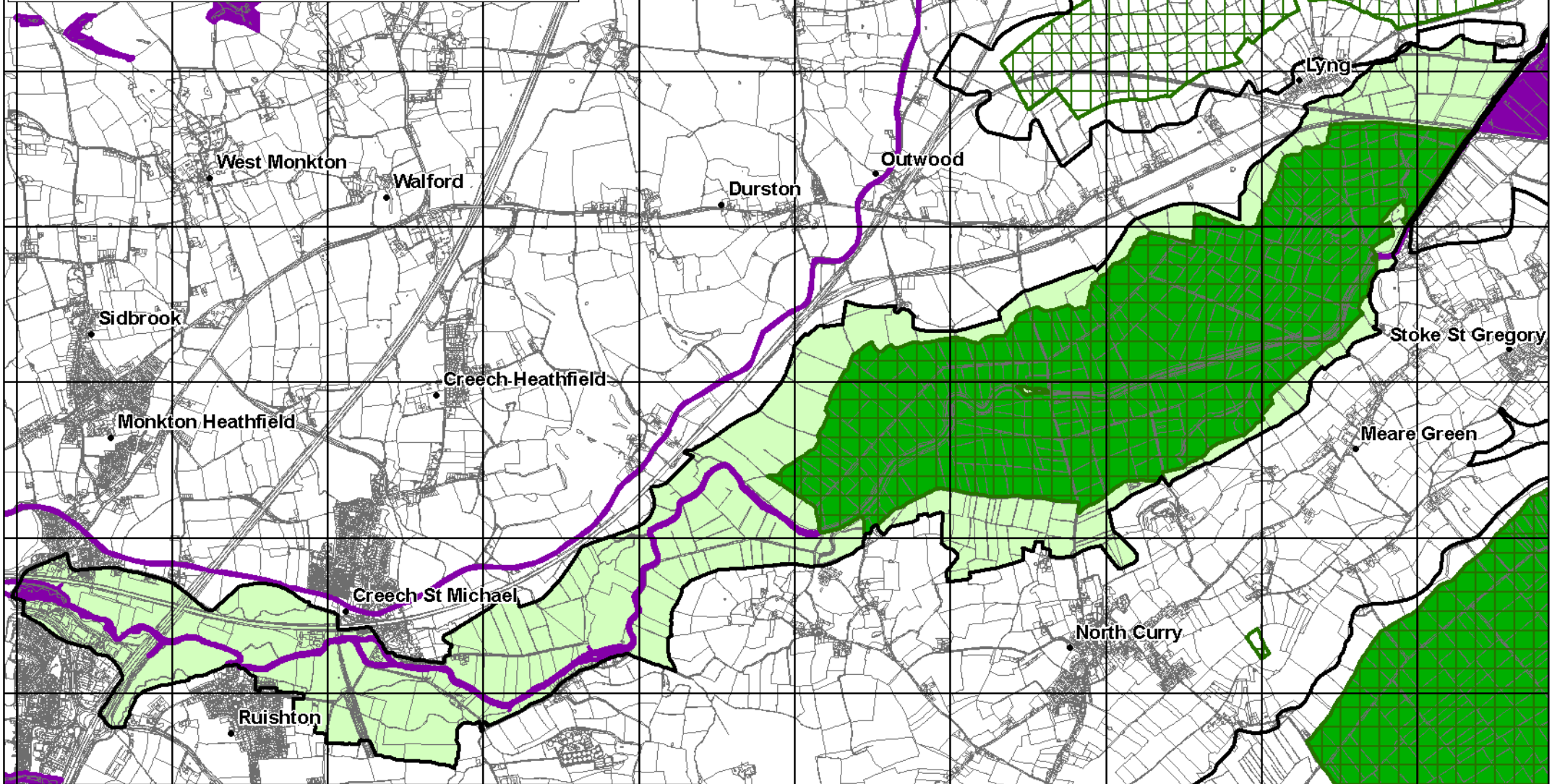
Currymoor WLMP

Map 4: Areas with water levels held above normal pen levels


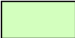



Currymoor WLMP

Map 5: Nature Conservation Sites



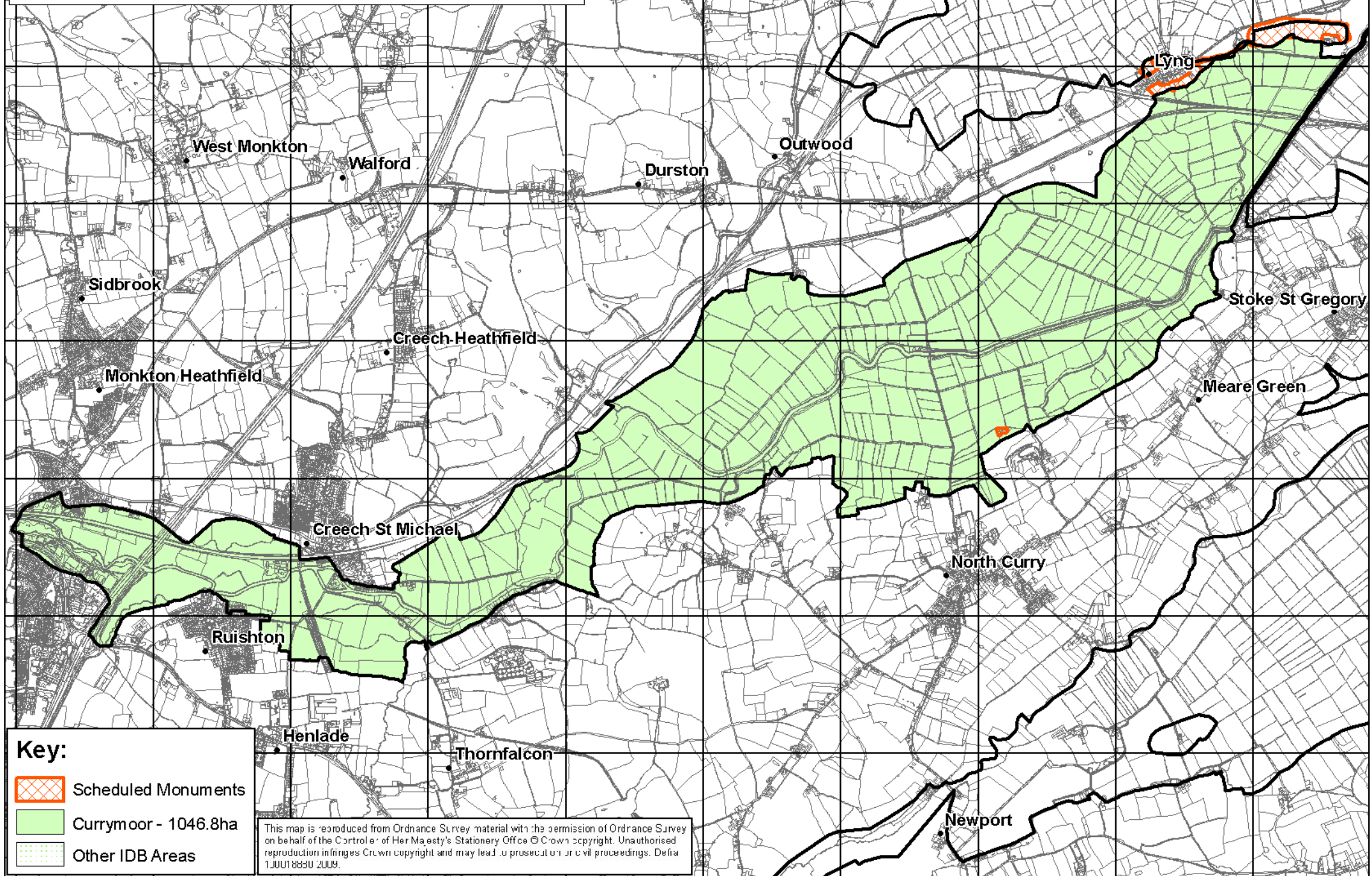
Key:

	Local Nature Reserve		Ramsar
	National Nature Reserve		Currymoor - 1046.8ha
	SSSI		Other IDB Areas
	Sites of Nature Conservation Importance		


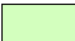

This map is reproduced from Ordnance Survey material with the permission of Ordnance Survey on behalf of the Controller of Her Majesty's Stationery Office © Crown copyright. Unauthorised reproduction infringes Crown copyright and may lead to prosecution or civil proceedings. Defra 130018830 2009.

Currymoor WLMP

Map 6: Archaeological sites & features



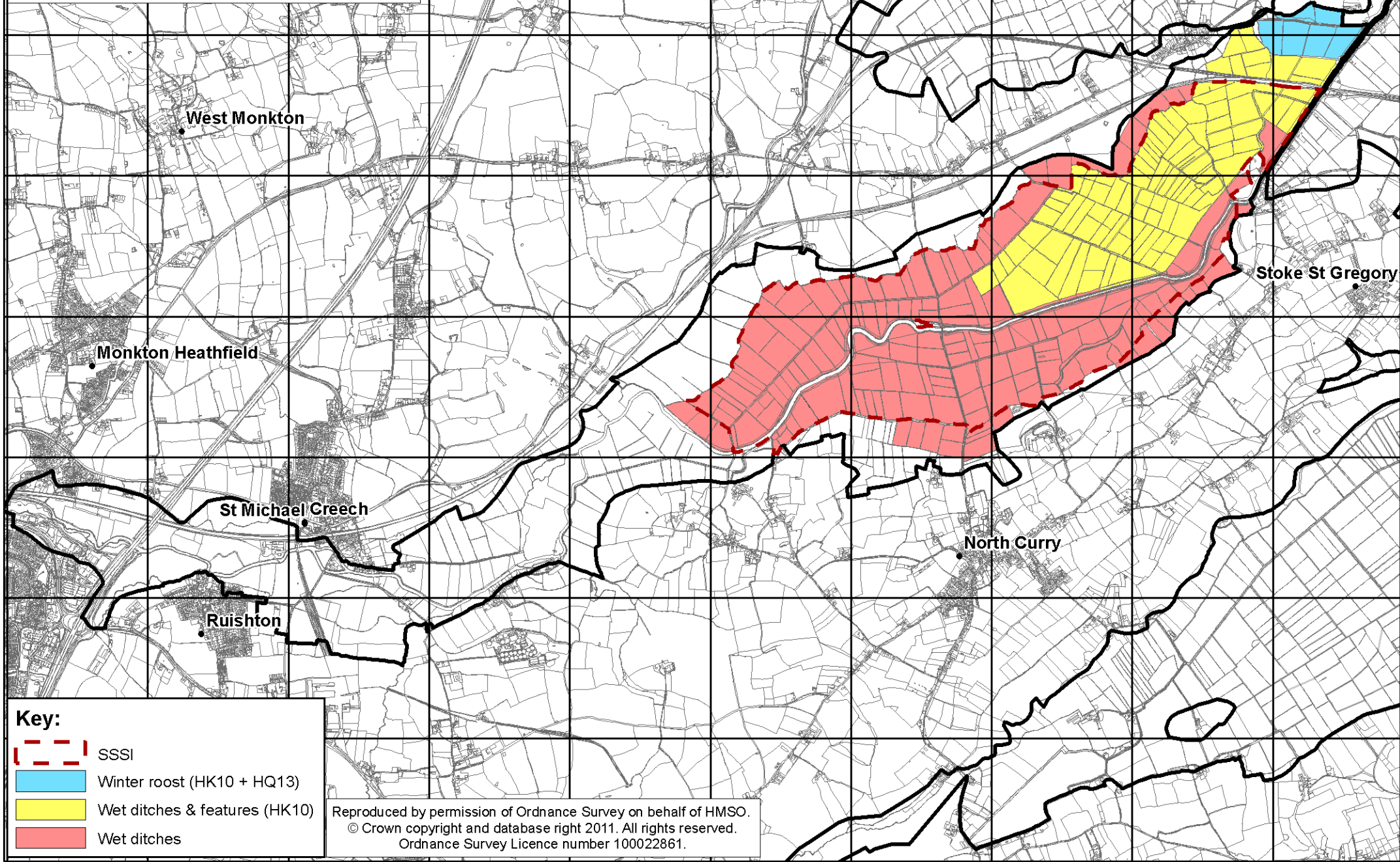
Key:

-  Scheduled Monuments
-  Currymoor - 1046.8ha
-  Other IDB Areas




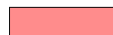
This map is reproduced from Ordnance Survey material with the permission of Ordnance Survey on behalf of the Controller of Her Majesty's Stationery Office © Crown copyright. Unauthorised reproduction infringes Crown copyright and may lead to prosecution or civil proceedings. Defra 1/2001/8830/2009.

Currymoor WLMP

Map 7: Water management target conditions



Key:

-  SSSI
-  Winter roost (HK10 + HQ13)
-  Wet ditches & features (HK10)
-  Wet ditches

Reproduced by permission of Ordnance Survey on behalf of HMSO.
© Crown copyright and database right 2011. All rights reserved.
Ordnance Survey Licence number 100022861.

Currymoor WLMP

Map 8: Flood zones within the plan area

